

Taxiway Maintenance

Evaluate the options for airpark taxiway maintenance and improvements

Whether you fly, ride, drive, or simply enjoy the peace,
Ruby Star is our home — and unity keeps us strong



Burning Platform



What do we need answered

The taxiways are in need of maintenance to prevent the loss of the current infrastructure. Aztec Gold, Iron Door have already become impassable without 4wd. Lost Emerald is quickly deteriorating as are the major through ways. How should we best use Airpark resources to maintain / improve the state of the taxiways. Our options:

	For each alternative being compared create a line item. The numbers should be increasing sequential but they are used only to tell which lines are alternatives. If # column is blank, the rest of the line will be ignored.	
#	Name	Description
1	Stop Road Maintenance	Allow Property owners to maintain roads on their property.
2	Hire Chip Seal Company	Request bids of chip seal in attempt to drive down cost
3	Hire Asphalt Company	Request bids of asphalt in attempt to drive down cost
4	Asphalt Use Sweat Equity	Maintain and improve roads using membership labor to control costs

What are the criteria for evaluation

- Important factors voiced by the membership include: Cost, Impact on Property Value, and Usability by aircraft.

Determine what criteria that each of your alternatives will be evaluated. Assign a number between 0 and 10 where 0 ignores that criteria and 10 means its extremely important. Weighting will be calculated for you. Remember to add a # to the first column if you are using that line				
#	Name	Description	Importance	Weight
1	Sqft Cost	Budgetary Costs from past experience	9	37.5%
2	Effort Required	Amount of effort by POA members	3	12.5%
3	Airplane Friendly	Likelyhood of damage to taxing aircraft	6	25.0%
4	Property Value Impact	Positive or negative affect on property value	6	25.0%

Evaluation

- Each option was evaluated against the criteria and weight

	Evaluate each criteria for each of your alternatives based on the type of subjectivity.					
#	Criteria	Subjectivity	Stop Road Maintenance	Hire Chip Seal Company	Hire Asphalt Company	Asphalt Use Sweat Equity
1	Sqft Cost	Quantitative - Low Value Best	\$0.00	\$7.00	\$9.00	\$2.10
2	Effort Required	Qualitative	5	3	3	4
3	Airplane Friendly	Qualitative	1	3	5	5
4	Property Value Impact	Qualitative	1	3	5	5

Qualitative
0 - Ignore
1 - Very Poor
2 - Poor
3 - Fair
4 - Good
5 - Excellent

Result

Evaluation of options for airpark road improvement and maintenance. Higher the score, the better per the criteria established		
	Alternative	Final Score
1	Stop Road Maintenance	3
2	Hire Chip Seal Company	2.625
3	Hire Asphalt Company	3.25
4	Asphalt Use Sweat Equity	4.5

- Asphalt with POA member sweat equity is our best option!



What Can we afford?

- 1 Ton asphalt is 80 square feet @ 2" rolled
- Price for 200 tons or more is \$2.10 per square foot
 - Less than 200 tons is \$2.30 per square foot
- 200 tons does 16,000 square feet
- If we assume \$70k / year income for the POA
- If we assume \$20k / year expenses for normal operation
- Each year we could afford \$50k
 - At \$2.10 / sqft: ~24k sqft
 - At 22' wide roads: 1080 ft of roadway








Path Forward

- Prior to resurfacing of the roads, the following needs to be addressed:
 - Pot holes need repair
 - Stabilization of road edge at water shed areas
 - Cleaning of the roadway

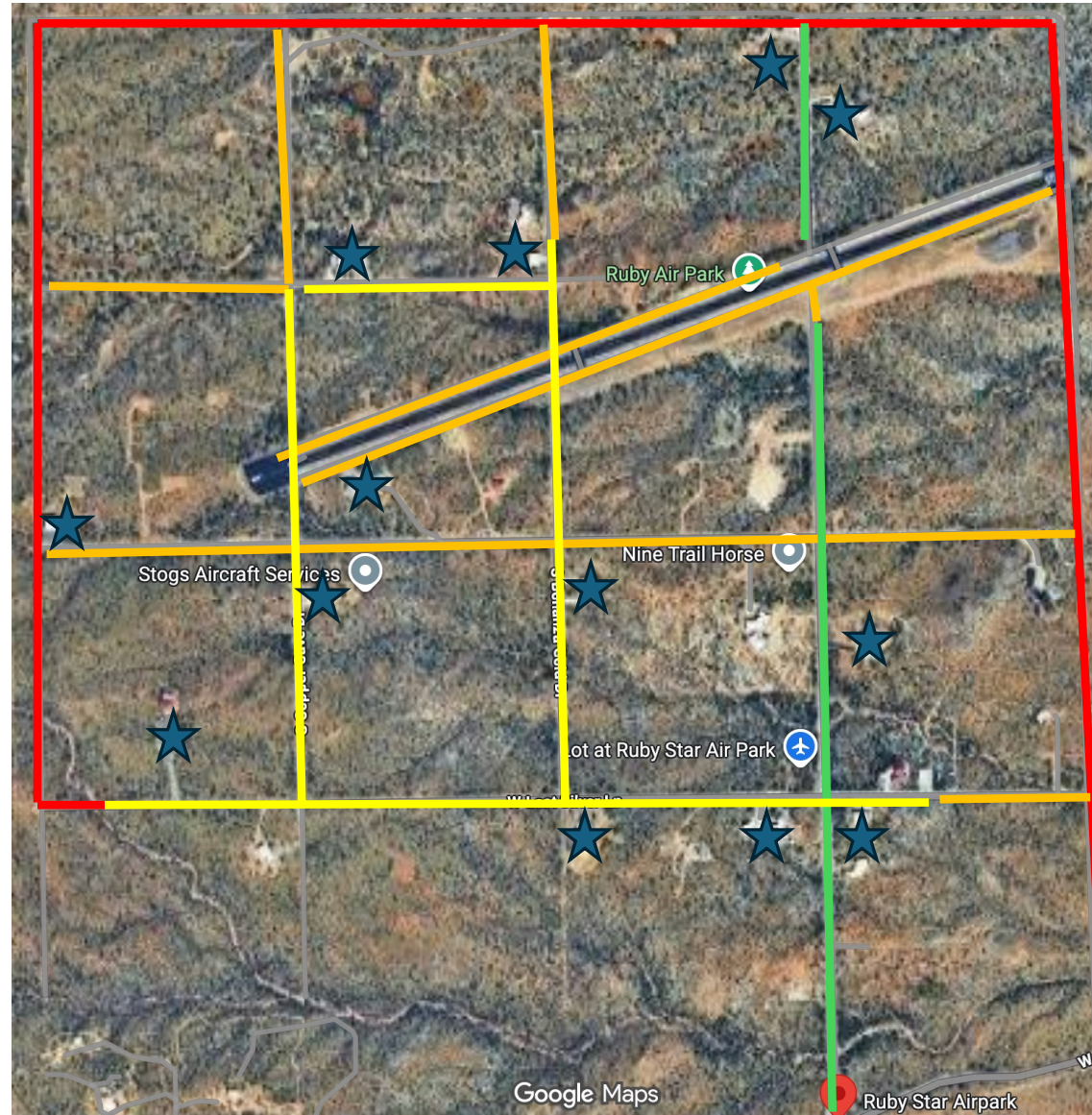


Road Status

-  Good Condition
-  Fair Condition
-  Poor Condition
-  Failing Condition
-  Current Aircraft Hangars

Highest Traffic Roads:

- Ruby Airpark Dr
- Lost Silver Ln
- Copper Cave Dr



Where first?

Lost Silver & Ruby Airpark Dr intersection is 4,000 sqft = \$8,400

“S-turn” @ Ruby Airpark Dr & runway is 10,900 sqft = \$22,890

Copper Cave to runway is 36,190 sqft = \$76,000

Intersection at Copper Cave and Lost Silver is 3,120 sqft = \$6,600

\$114k for this year, with follow-on years of \$50k/yr until alternate forms of income can be realized.



What Now?

- We need at least 4 able body volunteers
- Addition people needed for runners, hydration, etc
- Patch potholes during January & February
- Let's Get Rolling!!

